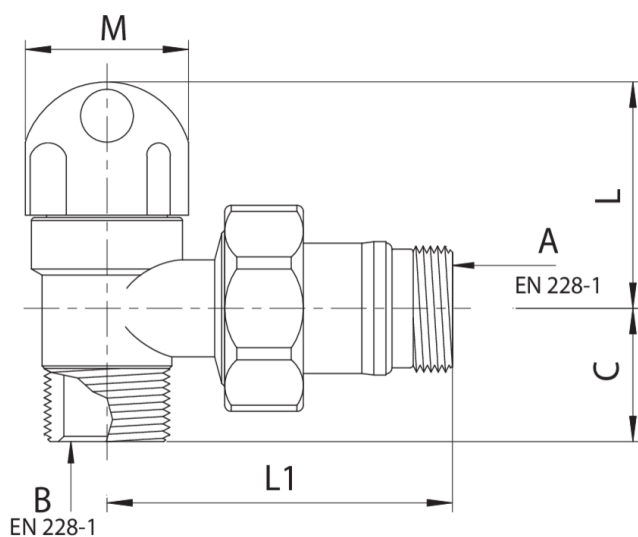


# 599205

Detentore ad angolo con attacco per tubi rame e multistrato.



## Specifiche tecniche



TRATTAMENTO - TREATMENT	A	B	BAG	BOX	MASTER BOX	CODICE	C	L	L1	M
Nichelato - Nickel plated	3/8"	16 x 1/2"	-	15	90	5992050403	20	41	49	27
Nichelato - Nickel plated	1/2"	16 x 1/2"	-	15	90	5992050404	23	41	56	27

# Applicazioni



DRINKING  
WATER



HEATING



HVAC



COMPRESSED  
AIR



INDUSTRIAL



MARINE