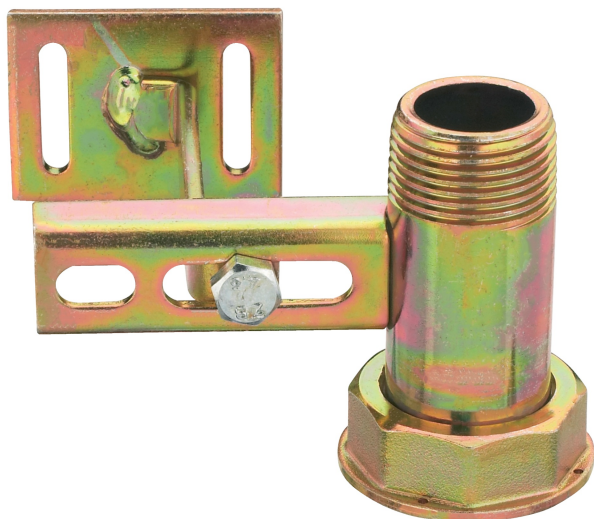
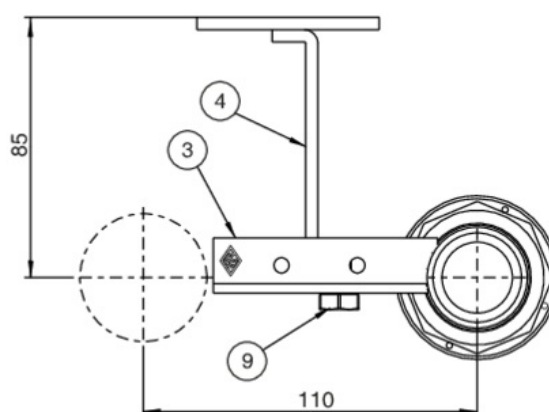
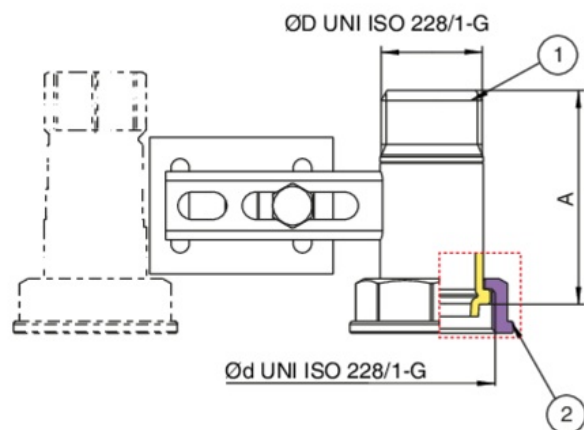


## 9F66

Traversa in acciaio, interasse 110 mm con canotto, filettatura UNI ISO 228 e zanca h.85 per tasselli ad espansione.



### Specifiche tecniche



ØD X ØD	DN	BOX	MASTER BOX	CODICE	A
1" x 1"1/4	-	-	25	9F66290000	70,5

# Applicazioni



GAS