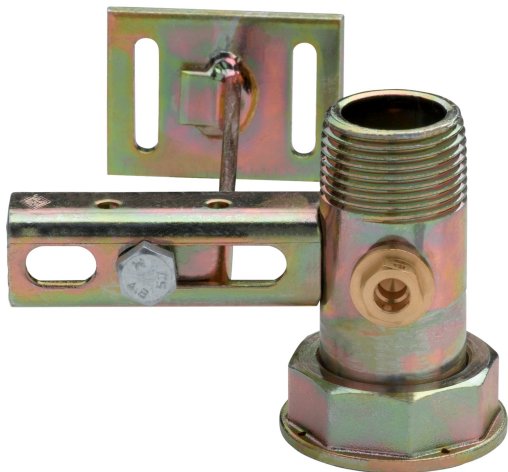


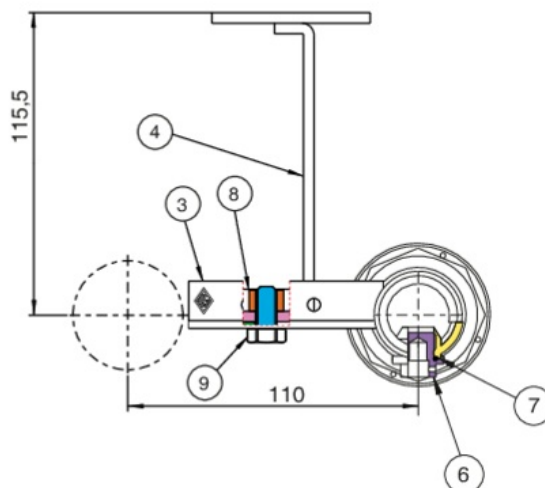
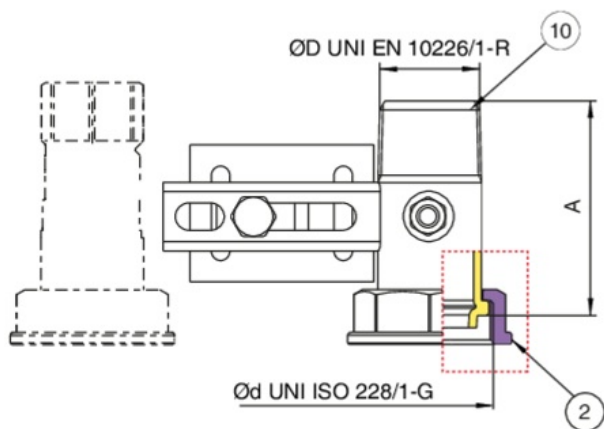
## 9F55



Traversa in acciaio, interasse 110 mm con canotto e presa pressione, filettatura EN 10226-1 e zanca h.115 per tasselli ad espansione.



### Specifiche tecniche



| ØD X ØD    | DN | BOX | MASTER BOX | CODICE     | A    |
|------------|----|-----|------------|------------|------|
| 1" x 1"1/4 | -  | -   | 25         | 9F55290000 | 70,5 |

# Applicazioni

