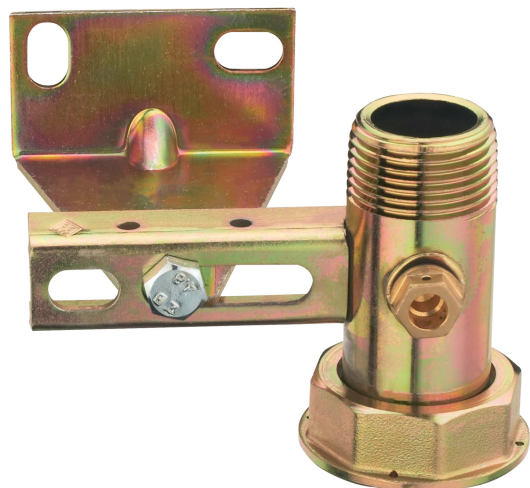


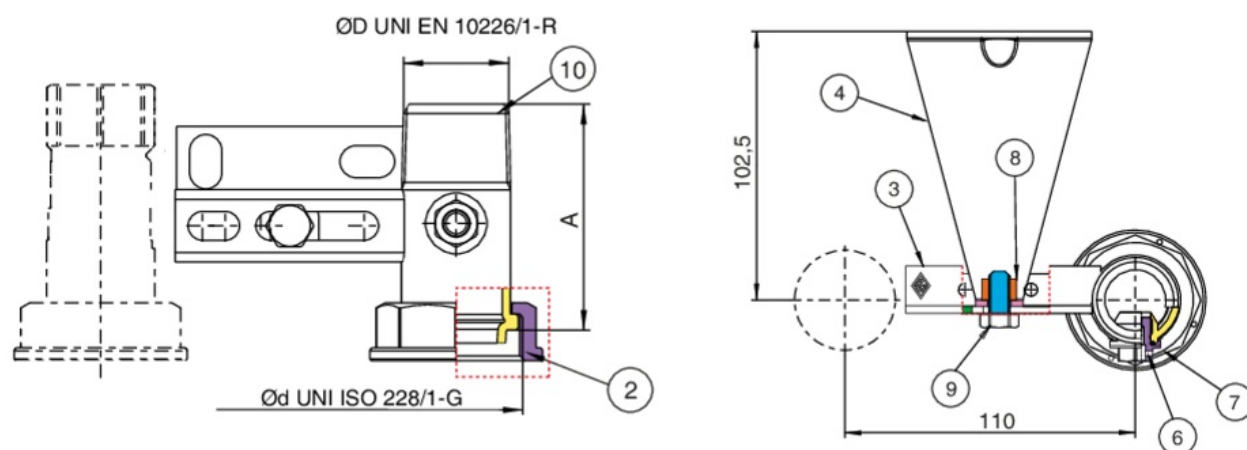
9F51



Traversa in acciaio interasse 110 mm, con canotto e presa pressione filettatura EN 10226-1, zanca triangolare per tasselli ad espansione.



Specifiche tecniche



ØD X ØD	PRESA PRESSIONE	BOX	MASTER BOX	CODICE	A
3/4" x 1"1/4	1/8	-	25	9F51280000	72
1" x 1"1/4	1/4	-	25	9F51290000	70

Applicazioni

