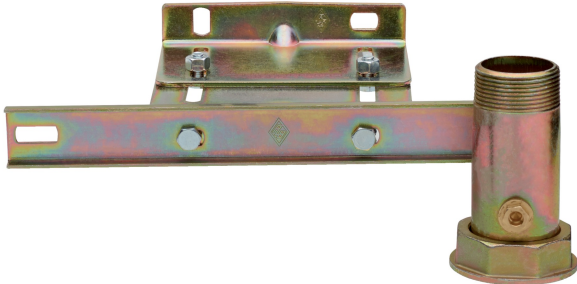


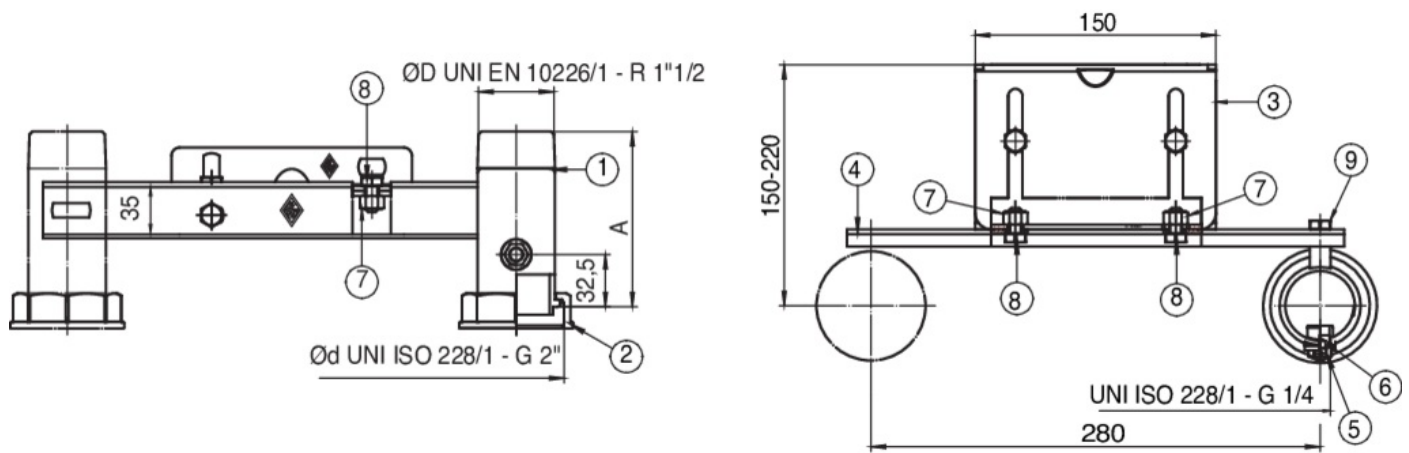
## 9F33



Steel cross beam, with threaded UNI EN10226-1 union and UNI ISO 228/1 G 1/4" pressure measurement connection, adjustable fixing plate for gas meter G10-G16.



### Technical specifications



| ØD X ØD    | DN | BOX | MASTER BOX | CODE       | A   | B   | C   | L MIN | L MAX | KG   |
|------------|----|-----|------------|------------|-----|-----|-----|-------|-------|------|
| 1"1/2 x 2" | -  | -   | 5          | 9F33690000 | 109 | 280 | 150 | 150   | 220   | 1,77 |

### Applications



GAS