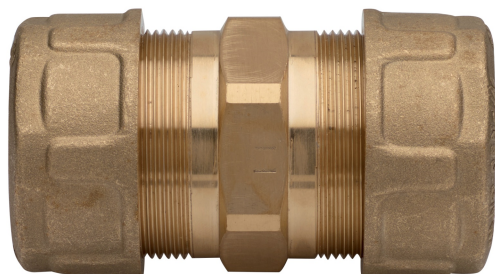
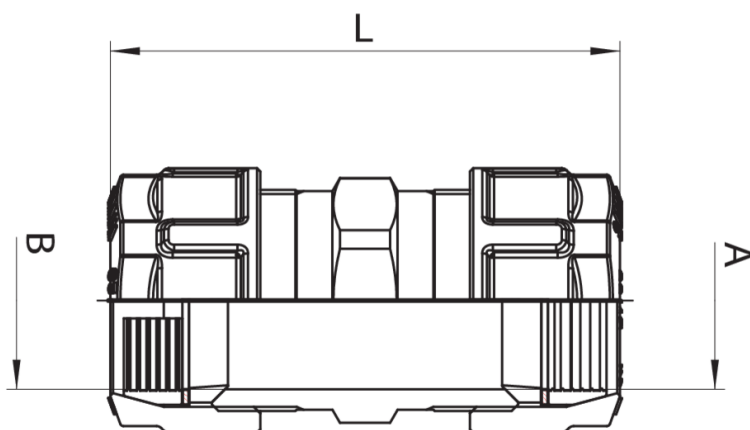


5F0200



Schnellanschluss Klemmverschraubung mit Elastomerdichtung mit trapezförmigem Querschnitt bis PN50/MOP5.

Technische Spezifikationen



| A X B | DN | BOX | MASTER BOX | CODE | L |
|---------------|----|-----|------------|----------|-----|
| 3/8" x 3/8" | - | 15 | 120 | 5F020003 | 65 |
| 1/2" x 1/2" | - | 15 | 120 | 5F020004 | 70 |
| 3/4" x 3/4" | - | 10 | 80 | 5F020005 | 78 |
| 1" x 1" | - | 6 | 48 | 5F020006 | 84 |
| 1"1/4 x 1"1/4 | - | 6 | 24 | 5F020007 | 92 |
| 1"1/2 x 1"1/2 | - | 6 | 24 | 5F020008 | 96 |
| 2" x 2" | - | 3 | 12 | 5F020010 | 104 |

Anwendungen



DRINKING
WATER



GAS