

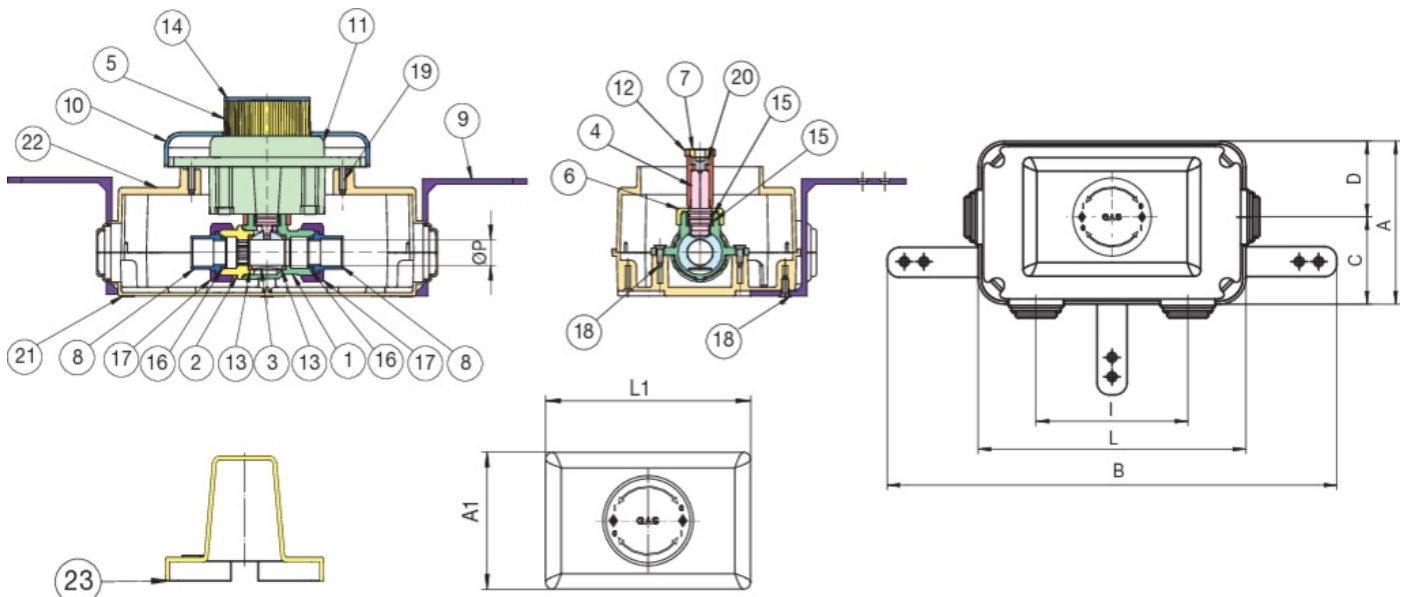
9370

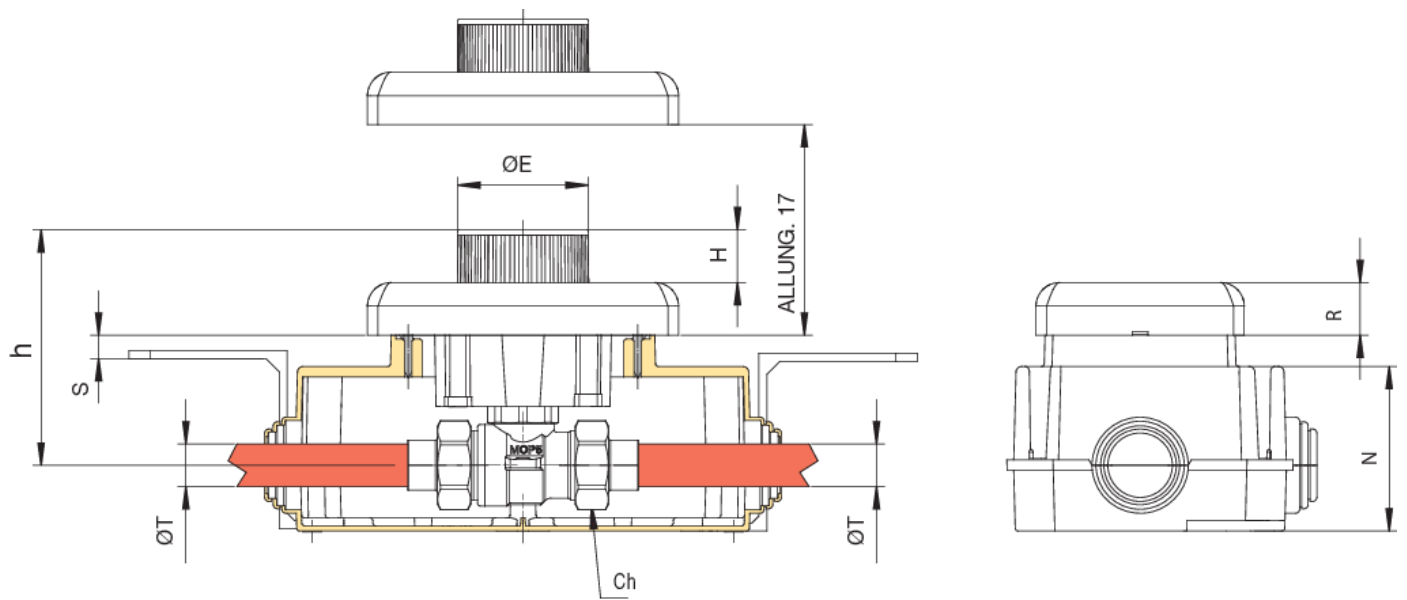
PATENTED



Unterflur-kugelhahn für Gas, lötlanschluss und Inspektionsschachtel nach UNI 7129, UNI 11528 Norm, mit Sicherheitshebel mit "pressen und drehen" Bedienknopf.

Technische Spezifikationen





| POSITION | TEILNAME | MATERIAL | NR. STÜCK |
|----------|----------------------|---------------------------|-----------|
| 1 | GEHÄUSE | BRASS CW617N UNI EN 12165 | 1 |
| 2 | MUFFE | BRASS CW614N UNI EN 12164 | 1 |
| 3 | KUGEL | BRASS CW617N UNI EN 12165 | 1 |
| 4 | SPINDEL | BRASS CW614N UNI EN 12164 | 1 |
| 5 | RING | ABS | 1 |
| 6 | RING | BRASS CW614N UNI EN 12164 | 1 |
| 7 | RING | BRASS CW614N UNI EN 12164 | 1 |
| 8 | VERBINDUNGSSTÜCK | BRONZE G Cu Sn5 Zn5 Pb5 | 2 |
| 9 | LAGER | POM | 3 |
| 10 | PLATTE | ABS | 1 |
| 11 | BEDIENUNGSSYSTEM | POM | 1 |
| 12 | ALLONGE | BRASS CW614N UNI EN 12164 | 1 |
| 13 | KUGRLDICHUNG | PTFE | 2 |
| 14 | KAPPE | ABS | 1 |
| 15 | O-RING | NBR | 2 |
| 16 | O-RING | HNBR | 2 |
| 17 | MUTTER | BRASS CW617N UNI EN 12165 | 2 |
| 18 | SCHRAUBE | STEEL | 5 |
| 19 | SCHRAUBE | STEEL | 2 |
| 20 | SCHRAUBE | BRASS CW614N UNI EN 20898 | 1 |
| 21 | INSPEKTIONSSCHACHTEL | HIPS | 1 |
| 22 | INSPEKTIONSSCHACHTEL | HIPS | 1 |
| 23 | ABDECKUNG | HIPS | 1 |

| GRÖSSE | DN | BOX | MASTER BOX | CODE | MATERIALE - MATERIALS | ØT | ØP | A | A1 | B | C | D | ØE | H | H | I | CH | L | L1 | N | R | S | KG |
|--------|----|-----|------------|-------------|-----------------------------------|----|----|-----|----|-----|----|----|----|----|----|-----|----|-----|-----|------|----|---|------|
| 12 | 15 | 1 | 3 | 9370120000* | PLASTICA CROMATA - CROMED PLASTIC | 12 | 15 | 109 | 80 | 299 | 58 | 51 | 50 | 90 | 20 | 101 | 30 | 178 | 120 | 62,5 | 20 | 9 | 0,47 |
| 12 | 15 | 1 | 4 | 9370120001* | PLASTICA NERA - BLACK PLASTIC | 12 | 15 | 109 | 80 | 299 | 58 | 51 | 50 | 90 | 20 | 101 | 30 | 178 | 120 | 62,5 | 20 | 9 | 0,47 |
| 12 | 15 | 1 | 4 | 9370120002* | PLASTICA BIANCA - WHITE PLASTIC | 12 | 15 | 109 | 80 | 299 | 58 | 51 | 50 | 90 | 20 | 101 | 30 | 178 | 120 | 62,5 | 20 | 9 | 0,47 |
| 14 | 15 | 1 | 3 | 9370140000* | PLASTICA CROMATA - CROMED PLASTIC | 14 | 15 | 109 | 80 | 299 | 58 | 51 | 50 | 90 | 20 | 101 | 30 | 178 | 120 | 62,5 | 20 | 9 | 0,48 |
| 14 | 15 | 1 | 4 | 9370140001* | PLASTICA NERA - BLACK PLASTIC | 14 | 15 | 109 | 80 | 299 | 58 | 51 | 50 | 90 | 20 | 101 | 30 | 178 | 120 | 62,5 | 20 | 9 | 0,48 |
| 14 | 15 | 1 | 4 | 9370140002* | PLASTICA BIANCA - WHITE PLASTIC | 14 | 15 | 109 | 80 | 299 | 58 | 51 | 50 | 90 | 20 | 101 | 30 | 178 | 120 | 62,5 | 20 | 9 | 0,48 |
| 16 | 15 | 1 | 3 | 9370160000* | PLASTICA CROMATA - CROMED PLASTIC | 16 | 15 | 109 | 80 | 299 | 58 | 51 | 50 | 90 | 20 | 101 | 30 | 178 | 120 | 62,5 | 20 | 9 | 0,46 |
| 16 | 15 | 1 | 4 | 9370160001* | PLASTICA NERA - BLACK PLASTIC | 16 | 15 | 109 | 80 | 299 | 58 | 51 | 50 | 90 | 20 | 101 | 30 | 178 | 120 | 62,5 | 20 | 9 | 0,46 |
| 16 | 15 | 1 | 4 | 9370160002* | PLASTICA BIANCA - WHITE PLASTIC | 16 | 15 | 109 | 80 | 299 | 58 | 51 | 50 | 90 | 20 | 101 | 30 | 178 | 120 | 62,5 | 20 | 9 | 0,46 |
| 18 | 15 | 1 | 3 | 9370180000* | PLASTICA CROMATA - CROMED PLASTIC | 18 | 15 | 109 | 80 | 299 | 58 | 51 | 50 | 90 | 20 | 101 | 30 | 178 | 120 | 62,5 | 20 | 9 | 0,47 |
| 18 | 15 | 1 | 4 | 9370180001* | PLASTICA NERA - BLACK PLASTIC | 18 | 15 | 109 | 80 | 299 | 58 | 51 | 50 | 90 | 20 | 101 | 30 | 178 | 120 | 62,5 | 20 | 9 | 0,47 |
| 18 | 15 | 1 | 4 | 9370180002* | PLASTICA BIANCA - WHITE PLASTIC | 18 | 15 | 109 | 80 | 299 | 58 | 51 | 50 | 90 | 20 | 101 | 30 | 178 | 120 | 62,5 | 20 | 9 | 0,47 |
| 22 | 15 | 1 | 3 | 9370220000* | PLASTICA CROMATA - CROMED PLASTIC | 22 | 15 | 109 | 80 | 299 | 58 | 51 | 50 | 90 | 20 | 101 | 30 | 178 | 120 | 62,5 | 20 | 9 | 0,53 |
| 22 | 15 | 1 | 4 | 9370220001* | PLASTICA NERA - BLACK PLASTIC | 22 | 15 | 109 | 80 | 299 | 58 | 51 | 50 | 90 | 20 | 101 | 30 | 178 | 120 | 62,5 | 20 | 9 | 0,53 |
| 22 | 15 | 1 | 4 | 9370220002* | PLASTICA BIANCA - WHITE PLASTIC | 22 | 15 | 109 | 80 | 299 | 58 | 51 | 50 | 90 | 20 | 101 | 30 | 178 | 120 | 62,5 | 20 | 9 | 0,53 |

***937 C** valve included.

Anwendungen



GAS